



TOGETHER WE BUILD VALUE



**CAMERON
WATERMAN**
SERVICES COMPANY

#9 TOBY'S DRIVE,
LOWLANDS , TOBAGO

#4 CAWNPORE STREET,
ST. JAMES, TRINIDAD

GENERAL CONTRACTING
MANAGEMENT CONTRACTING
CONSTRUCTION MANAGEMENT
DESIGN-BUILD
PRECONSTRUCTION SERVICES

T: 868 628 0467
F: 868 622 5870
E: cwscl2006@yahoo.com

CONTENTS

ABOUT US

OUR SERVICES

QUALITY MANAGEMENT

HS&E MANAGEMENT

PROJECT PORTFOLIO

**WE HELP OUR CLIENTS BUILD
CUSTOMIZED SOLUTIONS**



ABOUT US

CAMERON WATERMAN SERVICES COMPANY has been operating in Trinidad and Tobago since 2001. We are a professional full service general contractor specializing in residential, commercial, infrastructural and civil engineering projects to clients from project inception, through design and construction, to completion and extending into the operational life cycle. CWSC offers a comprehensive range of construction services that enables us to tailor our delivery method to match clients' needs, goals and budget. Our commitment is to add value to your project and help you to ensure its success.

The company prides itself on its ability to deliver quality workmanship based on an intimate understanding of the client's requirements. We have built our reputation on our client focus and hands-on approach, paying close attention to the fine details to deliver the best quality and cost-effective services to our clients on a long term basis. We are proud of the fact that the majority of our workload comes from repeat business and that we have a strong reputation for our competitive edge and reliable execution of all projects undertaken.

We are focused on reducing client risk, improving value and assuring project outcomes that are on time, to required quality and on budget in all market sectors of the built environment. This is achieved through our relentless attention to detail and an experienced team with the drive and customer focus to ensure client satisfaction is a given on all our projects.

Our vision is to be amongst the top echelon of contractors in Trinidad and Tobago and the Caribbean. With this vision we are committed to the growth of our business and providing the best quality services that will ensure our clients achieve a measurable difference in the value, quality, cost and completion time of their projects no matter its size and complexity. CAMERON WATERMAN is versatile enough to take on projects of all sizes, enhanced by the combined specialised skills sets and resources of our directors, staff and consultants.



OUR SERVICES

CAMERON WATERMAN offers a comprehensive range of construction services which enables us to tailor our delivery method to match clients' needs, goals and budget. Our commitment is to add value to your project and help you to ensure it success.

GENERAL CONTRACTING

As your general contractor, we will execute and manage each project diligently. We will consult with you, your architect, consultants and specialist sub-contractors to ensure that the best methods and materials are utilised to suit the scope of work for your project. We ensure that every detail of your project is executed as designed, while selecting the most qualified subcontractors. Our managers, supervisors and site staff will ensure quality results, while providing cost effective solutions that will ensure that your project is on schedule and within budget.

CONSTRUCTION MANAGEMENT

As your construction manager, we will operate as the decision maker on your behalf. Whether it is during the design phases or organising and controlling the trade contractors on site, we will always act in your best interest to ensure that your project is completed on time, to desired quality and within established budget. In addition, CAMERON WATERMAN provides you with the option to self-perform all trades on site for a guaranteed maximum price (i.e. at our risk).

MANAGEMENT CONTRACTING

As your management contractor, we will lead and manage the project on your behalf. Whether it is during the design phases or organising and controlling the works contractors on site, CAMERON WATERMAN will execute the works in your best interest to ensure that your project is completed on time, to desired quality and within established budget. In addition, we provide you with the option of subcontracting all the works required on site



OUR SERVICES cont'd



DESIGN-BUILD

As your Design-Build contractor, we carry out the architectural and design planning as well as commencing and completing the actual construction on time and on budget. Our services are designed with you in mind and as such we will become involved during the early planning phases of your project. This allows us to plan a more realistic budget and schedule during the initial stages.

PRE-CONSTRUCTION SERVICES

The aim of our pre-construction services is to eliminate surprises once construction work begins on site, and to provide realistic cost effective solutions that will ensure your project value upon completion. We do this through a collaborative effort between all parties; including the client, design consultants, sub-contractors and utility companies.

Our preconstruction services are:

- Tender documents including Bills of Quantities production
- Construction cost planning & control
- Construction cost estimating
- Value engineering
- Construction project management and administration
- Construction planning & scheduling
- Architectural designs
- Procurement route advice
- Site & land surveying

QUALITY MANAGEMENT



Quality is of paramount importance to all team members at CAMERON WATERMAN. We are continually evaluating and improving the level of service we offer our clients to ensure the reputation for quality on which we pride ourselves is maintained and grown. We are committed to providing projects that are not just fit for purpose, but which exceed expectation in terms of quality of build and functionality. Our reputation for both the quality of our project management and finished projects is achieved through our proven Quality Management System.

Our Quality System is an integral part of our company's management activity and is implemented through a comprehensive set of procedures and controls which are documented in accordance with ISO 9001:2008. It sets the high standards of co-operation required by all members of staff to ensure that the quality of service we provide to our clients is second to none.

The purpose of such a Quality System is to "get it right first time every time". Our directors and staff are committed to driving this process actively to give our clients the satisfaction of knowing that we will deliver exactly what we promise.



HS&E MANAGEMENT



We are committed to providing a safe working environment that is fit for the intended purpose and ensures that health and safety issues are a priority for all business and site operations. CAMERON WATERMAN has developed its systems and procedures over many years based on these ethics. We continuously improve the Integrated Management Systems governing our Health, Safety, Environmental and Quality Codes of Practice. These systems are living documents that are continually reviewed and improved in line with industry best practice.

Our Safety Management System complies with the requirements of ISO 18001.

CAMERON WATERMAN is committed to the environment, sustainable programmes and to continuous improvement of our direct and indirect impacts, which marks our contribution to improving the world in which we live. We recognise the importance of utilising the most modern and most sustainable materials within the construction process and strive to achieve “industry best” practices in all our operations by:

- Complying with all applicable laws, regulations and statutory requirements relating to environmental issues

- Managing environmental and related issues in accordance with any client requirements, policies and procedures
- Applying waste minimisation principles, and taking all practicable steps to prevent pollution and other adverse effects from our operations
- Establishing, monitoring, auditing and continually improving an Environmental Management System, codified in an Environmental Operations Manual, which is consistent with the certification requirements of ISO 14001.
- Educating and training its employees to continually improve awareness, skills and knowledge of environmental issues and practices
- Identifying, investigating and satisfactorily resolving all non-conformances as part of a drive for continuous improvement
- Monitoring and evaluating the environmental performance of subcontractors and suppliers and implementing effective communication with them on environmental issues

PROJECT PORTFOLIO

PROJECT TYPES :

COMMERCIAL

EDUCATIONAL

RESIDENTIAL

RELIGIOUS

OTHER



TRINIDAD & TOBAGO FIRE SERVICES CREDIT UNION

CLIENT | TTFSCU

LOCATION | Tobago

SERVICE | General Contracting

DESCRIPTION | A three storey reinforced concrete framed building with associated hard and soft landscaping and site services.

SIZE | 9,291 square feet

CONTRACT VALUE | \$17M

STATUS | Completed April 2019



02

EDUCATIONAL

HOLMAN WILLIAMS BUILDING

CLIENT | UWI, St Augustine Campus

LOCATION | Mount Hope, Trinidad

SERVICE | Design-Build

DESCRIPTION | A single storey reinforced concrete framed classroom/laboratory building with associated hard and soft landscaping and site services.

SIZE | 4,000 square feet

CONTRACT VALUE | \$4.6M

STATUS | Completed 2015





UWI OFFICIALS & PLAYERS FACILITIES

CLIENT | UWI, St Augustine Campus

LOCATION | St. Augustine, Trinidad

SERVICE | Design-Build

DESCRIPTION | A single storey reinforced concrete framed building with associated hard and soft landscaping and site services.

SIZE | 4,400 square feet

CONTRACT VALUE | \$3M

STATUS | Completed 2007



STEVE BENNETT BUILDING

CLIENT | UWI, St Augustine Campus

LOCATION | Mount Hope, Trinidad

SERVICE | Design-Build

DESCRIPTION | A single storey reinforced concrete framed classroom/ laboratory building with associated hard and soft landscaping and site services.

SIZE | 3,400 square feet

CONTRACT VALUE | \$3M

STATUS | Completed 2008

02

EDUCATIONAL

ALMA JORDAN LIBRARY RENOVATIONS

CLIENT | UWI, St Augustine Campus

LOCATION | St. Augustine, Trinidad

SERVICE | General Contracting

DESCRIPTION | Renovations and extension to the Main Library.

SIZE | 2,100 square feet

CONTRACT VALUE | \$1.8M

STATUS | Completed 2012





SIR ARTHUR LEWIS HALLS OF RESIDENCE

CLIENT | UWI, St Augustine Campus
LOCATION | St. Augustine, Trinidad
SERVICE | General Contracting
DESCRIPTION | All masonry works to four buildings. The works included structural steel column & beam encasement, concrete to CFD decking, blockwork installation, rendering and roof slab construction. It also included all builder's works required for the new Sewage Treatment Plant for the facility.
SIZE | 43,650 square feet
CONTRACT VALUE | \$8M
STATUS | Completed 2008





VILLAIN RESIDENCE

CLIENT | Paul Villain

LOCATION | Cascade, Trinidad

SERVICE | General Contracting

DESCRIPTION | Construction of a two-storey residence inclusive of all services.

SIZE | 3,400 square feet

CONTRACT VALUE | \$2M

STATUS | Completed 2008



VILLA BEING GATEHOUSE

CLIENT | Dr. Auliana Poon

LOCATION | Arnos Vale, Tobago

SERVICE | General Contracting

SIZE | 1,475 square feet

DESCRIPTION | A 2-storey villa at the client's Arnos Vale, Tobago compound.

CONTRACT VALUE | \$1.5M

STATUS | Completed 2015



COBLENTZ APARTMENTS

CLIENT | Purple Chi Limited

LOCATION | Cascade, Trinidad

SERVICE | General Contracting

SIZE | 15,000 square feet

DESCRIPTION | A 3-storey reinforced concrete framed building with associated hard and soft landscaping and site services.

CONTRACT VALUE | \$6.7M

STATUS | Completed 2008



MT. LAMBERT APARTMENTS

CLIENT | Quiptum Limited

LOCATION | Mt. Lambert, Trinidad

SERVICE | General Contracting

DESCRIPTION | A 2-storey reinforced concrete framed building with associated hard and soft landscaping and site services.

SIZE | 5,000 square feet

CONTRACT VALUE | \$2.5M

STATUS | Completed 2010



LONGDENVILLE R.C. CHURCH

CLIENT | Parish of St. Phillip and St. James R.C. Church

LOCATION | Chaguanas, Trinidad

SERVICE | General Contracting

DESCRIPTION | A single-storey structural steel framed building with associated hard and soft landscaping and site services.

SIZE | 5,700 square feet

CONTRACT VALUE | \$3.5M

STATUS | Completed 2016



ST. MARY'S ANGLICAN CHURCH PARISH HALL

CLIENT | St. Mary's Anglican Church

LOCATION | Tacarigua, Trinidad

SERVICE | General Contracting

DESCRIPTION | A 2-storey structural steel framed building with associated hard and soft landscaping and site services.

SIZE | 9,300 square feet

CONTRACT VALUE | \$5M

STATUS | Completed 2012



ST MARGARET'S PARISH HALL

CLIENT | St. Margaret's Anglican Church

LOCATION | Belmont, Trinidad

SERVICE | General Contracting

DESCRIPTION | A fully air-conditioned hall with a seating capacity of 120 persons, inclusive of an office, reception area, meeting room and toilet facilities.

SIZE | 2,800 square feet

CONTRACT VALUE | \$3.8M

STATUS | Completed 2017

THIRD AVENUE REHABILITATION

CLIENT | Angostura Limited

LOCATION | Chaguaramas, Trinidad

SERVICE | Civil/road works

DESCRIPTION | Reconstructed the main road at Angostura's Chaguaramas facilities. This also included construction of box drains etc.

SIZE | N/A

CONTRACT VALUE | \$1.8M

STATUS | Completed 2015



HDC MALONEY OFFICE

CLIENT | HDC

LOCATION | Maloney, Trinidad

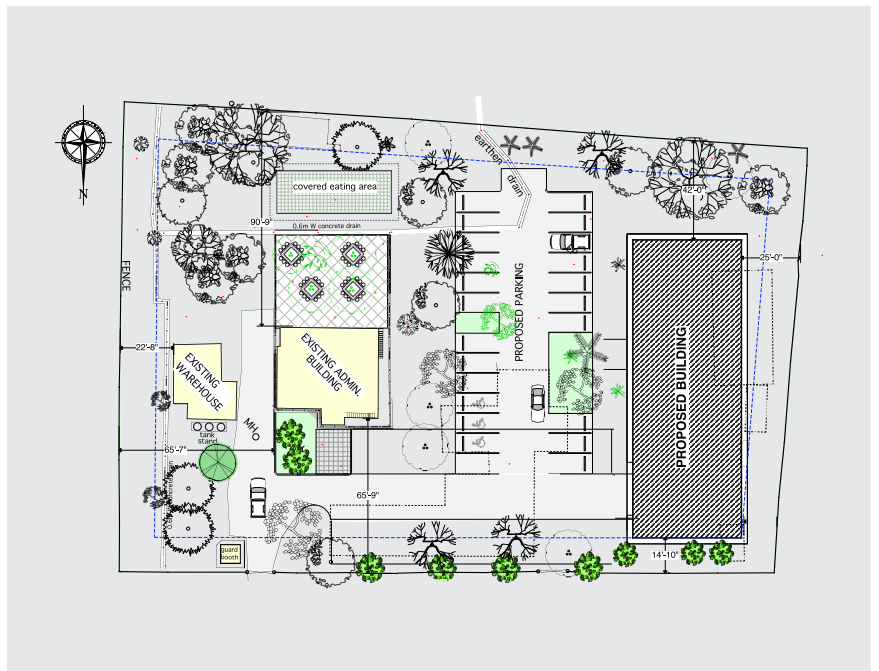
SERVICE | Pre-construction Services

DESCRIPTION | Provided full design services including the Tender Documents for a 2-storey reinforced concrete framed office building with external buildings and associated hard and soft landscaping and site services.

SIZE | 9,150 square feet

CONTRACT VALUE | N/A

STATUS | Completed 2007



Additional projects completed by CAMERON WATERMAN:

- Engineering Surveying for Trintoplan
- Ministry of National Security
 - Construction of the 9M diameter Earth Station Antenna Infrastructure located at Matura, Toco.
- Education Facilities Company Limited
 - Painting of Crystal Stream Government Primary School
 - Painting of Diego Martin Boys R.C. School
 - Construction of Roof and New Lab - Chaguanas North Secondary School
 - Painting of Sacred Heart R.C.
 - Painting of Chinapoo Government Primary School
 - Electrical Upgrade to Excel Government Primary School
 - General Repair works to Tunapuna Government Primary School
 - Electrical Infrastructure upgrade to St. Mary's College
 - Electrical Infrastructure upgrade to Bishop Anstey High School
- Electrical & Plumbing Repairs to Bishop Anstey High School
- Electrical Infrastructure upgrade to Mucurapo West Secondary School
- Electrical & Plumbing Repairs to Mucurapo West Secondary
- General Repair works to St. Francois Girls High School
- Ministry of Works – P.U.R.E. Division
 - Construction of Box Drains and Curb & Slipper drains at Las Lomas # 2 (completed Oct. 2011)
 - Patch Paving of Roads (completed Aug. 2012)
 - Engineering Surveying Services (Pre/Milled/Post Paving Surveys, Topographical Surveys & Cadastral Surveys) (ongoing)
 - Engineering Surveying for bridge construction (D'Abadie Bridge Reconstruction)
- WASA
 - Installation of Curb Valves (On going) Mains Repairs and Installation of Curb Valve, Stop Cork & Meters (on going)

